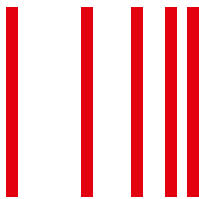


Techem Smart System: The platform for innovative added-value services.

The basis for transparency, energy and water savings.



Techem Smart System: the basis for added-value solutions.

Techem Smart System is the technological basis with which you can use quality added-value services. these include prompt Billing, regular Device Monitoring, convenient Reading Value Display, systematic Energy and Water Monitoring and a cost effective Energy-Saving System.

Your proven partner: Techem.

As the leading global solution provider for the management and billing of energy and water, Techem develops superior technologies. The housing industry profits from this every day, as it does from the leading global Techem radio technology system – proven millions of times in practice.

Your advantage: Techem Smart System.

Rising energy prices and increasing administrative work are the challenges the housing industry has to face. Our answer was to use our Techem Smart System to further develop radio technology and in doing so created a new standard for remote reading. It forms the basis for quality added-value services for all aspects of energy, water and cost savings.

The Techem Smart System added-value platform offers you clear advantages:

- Billing can be completed promptly by the due date.
- Permanent supervision with automated device monitoring.
- Reading values can be retrieved online at any time by you and your residents – retrospectively and exact to the day.
- Monitoring renders consumption and costs transparent.
- And what is more, adaption saves energy.

Deciding for Techem Smart System is a futureproof investment that pays dividends for you.



Convince yourself of the advantages of Techem Smart System.

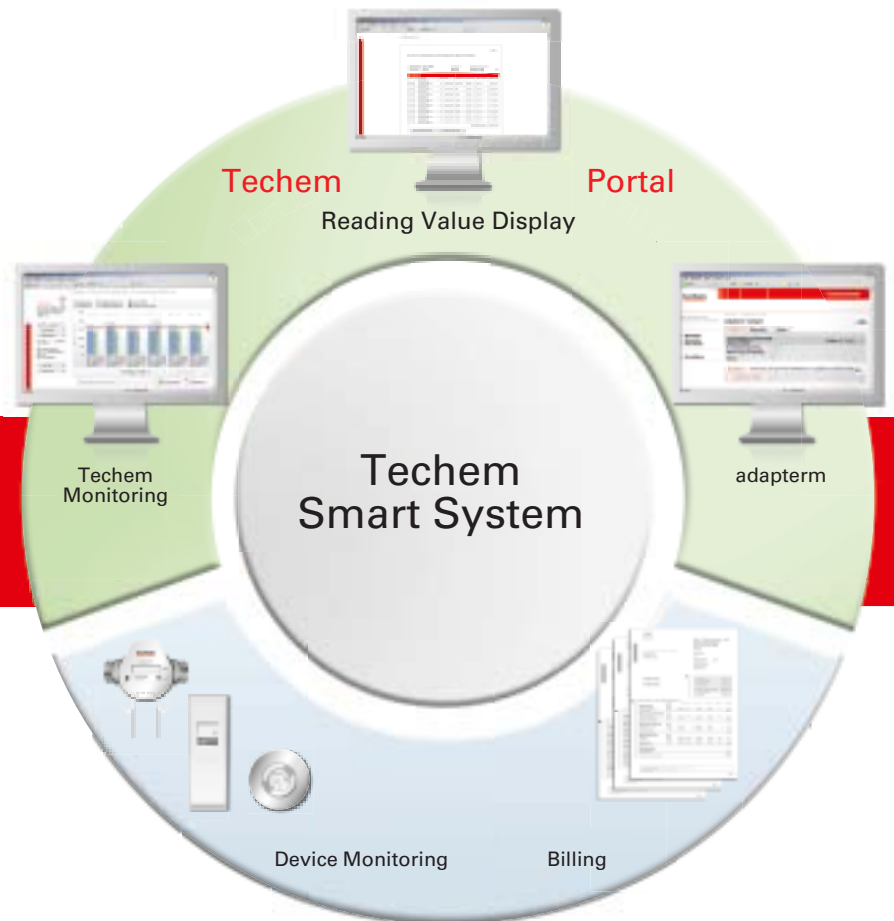
Techem Smart System provides you with access to a series of innovative services.

Prompt Billing.

Readouts are transmitted to the Techem data centre immediately after the due date. As soon as you send us the cost and tenant data, we can generate your statement promptly – in the highest quality.

Regular Device Monitoring.

A heat cost allocator or meter in one of your properties shows inconsistencies? In the past, this was only apparent on the day of the meter reading appointment. The consequences: Consumption estimates for the old and new billing period – and so more work for you. With the Techem Smart System this can no longer happen: We can regularly check all the end devices equipped with radio technology and track down and rectify sources of error straight away. Estimates and queries from the tenants are reduced to a minimum and you save time.



Convenient Reading Value Display.

Your resident challenges the meter or consumption values? With the Techem Reading Value Display, you and your residents are able to retrieve the reading values online at any time - retrospectively and exact to the day.

adapterm, the Energy Saving System.

adapterm is the cost-effective energy saving system from Techem. The solution ensures that the heating system only ever produces the heat the residents require - irrespective of whether oil, gas or district heat are used for heating. This results in a permanently optimised flow temperature and energy savings averaging 10%.

Techem Monitoring: Transparent consumption and costs.

With techem Smart System you can use all the possibilities of the monitoring we offer. This renders Energy and Water consumption and costs transparent – and all this within the current billing period.

Targeted Energy and Water monitoring.

- **Benchmark Analysis** compares your properties with similar properties from the Techem portfolio.
- The **Portfolio Analysis** compares the energy and water consumption and costs of your own properties with each one another and with the previous year's costs.
- The **Unit Analysis** provides you with a precise overview of the individual sources of consumption and costs.
- With the **Unit Analysis Plus** you will receive exact information about the development of consumption and costs of each individual unit down to monthly values.
- With the **Time Series Analysis** you can track the development of consumption and costs of your properties over the last years.
- With the **Intra-Year Unit Analysis**, you know at all times how the consumption values of individual units are developing. And not only at the end of the billing period, but whenever you want. This is only possible with Techem's remote reading technology. You can advise the residents specifically and decide which measures are implemented to improve energy consumption.

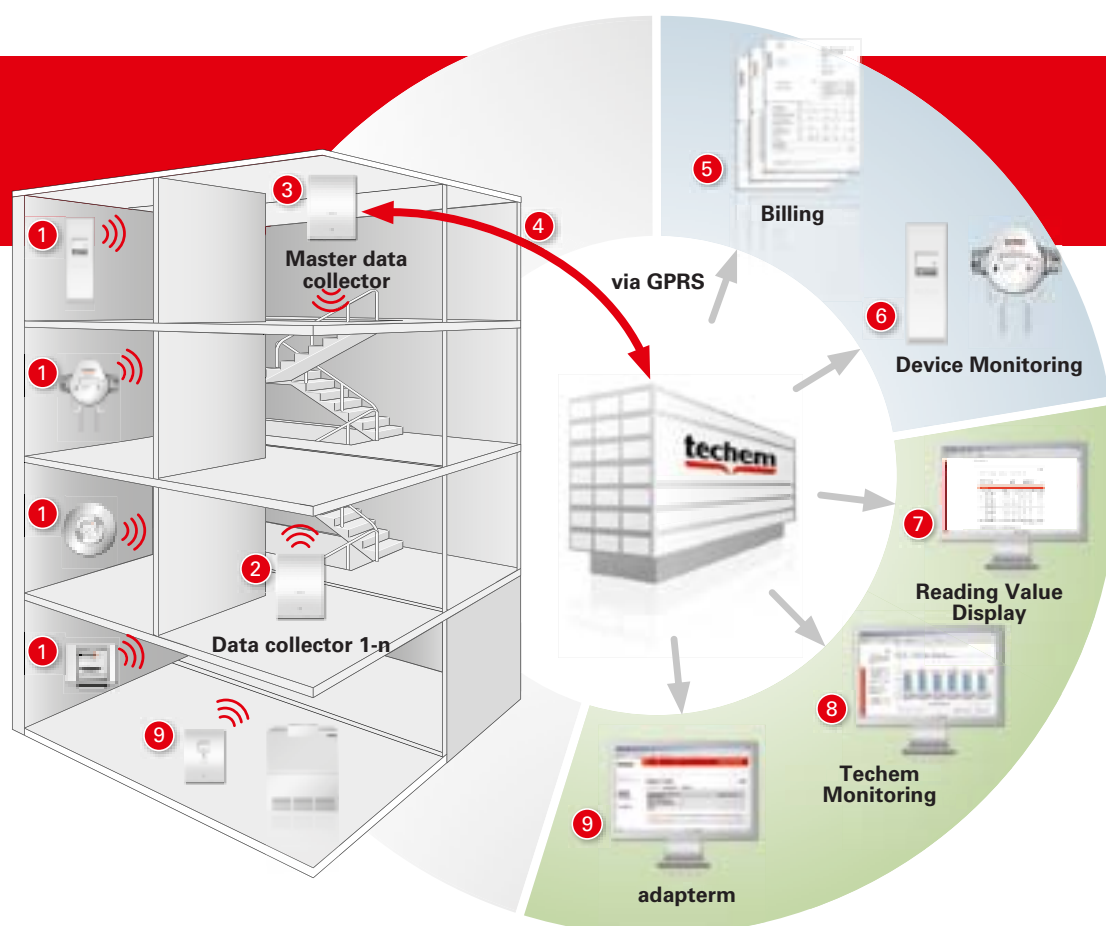
Techem Portal.

Would you like to manage your properties conveniently and reliably? You can access many Techem Smart System services from Techem Portal and save time.

On request, you can allow the residents access to Techem Portal. This means that the residents have access to their consumption data and further services.



The system and the added-value services at a glance.



The easy way to high performance functions.

- 1 Meter reading devices send their values to the data collector via radio transmission
- 2 The data collector saves the consumption values transmitted from the measuring devices and sends them to the master data collector
- 3 The master data collector saves consumption values and device status information from all devices
- 4 This data is transmitted by GPRS to the Techem computer centre
- 5 Prompt billing for your properties
- 6 Device Monitoring: Permanent monitoring of your end devices
- 7 Reading Value Display: Reading values can be retrieved online at any time by you and your residents – retrospectively and exact to the day.
- 8 Techem Monitoring: Analysis of energy and water consumption of your properties
- 9 adapterm – the Techem Energy Savings System

Techem Smart System: more services, less time spent.

Take advantage of this innovative platform.



Prompt Billing.

Reliable production thanks to automated data transmission straight after the due date.



Regular Device Monitoring.

Fewer estimates, fewer queries from residents, less time spent for you.



Convenient Reading Value Display.

Your resident challenges the meter or consumption values? With the Techem Reading Value Display, you and your residents are able to retrieve the reading values online at any time – retrospectively and exact to the day.



Targeted Techem Monitoring.

Identify changes in energy and water consumption within the billing period, advise residents specifically and make sound decisions on further action.



adapterm Energy-Saving System.

For lower energy consumption with the same convenience. Energy savings averaging 10% with regular documentation of the results.